

Newsletter



Upcoming Events...

Tue 10 Mar	P&C Meeting 7pm
Tue 24 Mar	Year 4 Oliver Excursion
Mon 30 Mar	Harmony Day/ Anti Bullying Day Mufti Day Orange Mufti
Fri 27 Mar	PSSA Sydney North Swimming Carnival
Tue 31 Mar	Cross Country Carnival
Fri 3 Apr	Term 1 PBL rewards day
Wed 8 Apr	Easter Hat Parade 9.15am -COLA
Thur 9 Apr	Anzac Day Ceremony 10:30am Last Day of School
Fri 10 Apr	GOOD FRIDAY
Mon 13 Apr	EASTER MONDAY
Mon 27 Apr	Staff Development Day
Tue 28 Apr	Term 2 Commences

PLEASE NOTE THAT ALL DATES ARE SUBJECT TO LATE CHANGE

NEWSLETTER REPORT - TERM 1 WEEK 5 & 6 PRINCIPAL REPORT

BULLYING

Last week I had the privilege of sitting down with all Stage 3 students to discuss bullying and how to be safe while we are online. We discussed many things in particular about being online. We live in a world that is always connected. 24 hours a day, 7 days a week 365 days a year. As a Principal that connection is a great opportunity for me to know what is happening in the world, what is happening at school and how to better serve the students at Bateau Bay Public School.

That said, a negative to that is I'm always connected with the world, for better or worse. As an adult I endeavour to negotiate this connectivity and put strategies in place so that I can always find that work / life balance. The same is said with children, connection, information and entertainment opportunities are endless BUT it also can open our children up to be exposed to things that are not nice. As discussed with the Stage 3 students, it is important that we protect ourselves. Parents have the responsibility to ensure that all online content, apps and 'friends' are things that we want our children to be involved with. As parents of young children, we must take responsibility for the content our young children are posting, particularly if the children are under the age of 13, the standard age to access many social media apps. Parents play such a vital role in ensuring their child is safe and is being safe. Parents can do this by ensuring that children know how to speak appropriately online, that children block people who

EN AVANT – GO FORWARD

2A Waratah Street
Bateau Bay NSW 2261
Phone: 4332 8000

Email: bateaubay-p.school@det.nsw.gov.au

School P&C Meets on the second Tuesday of month during school term.

All members of the school
community are invited to attend.



are not nice, children are only friends with people they know directly and that children understand that they have a network of responsible adults to listen and support if needed. As we set a great example with what we post and continue to monitor our children, I believe that they will be safe whilst negotiating this online world.

PERSONAL AND COMMUNITY HYGIENE

As published earlier this week; As a school we take personal and community hygiene very seriously. We teach and encourage all children to regularly wash their hands with soap to prevent the spread of germs. As a school we provide soap in all the toilets and there is soap provided in each wing of the school. With this provision, staff regularly ask students to wash their hands and we regularly teach students the importance of personal health. We would like to encourage parents to remind students to use the soap provided to wash hands and teach them about personal hygiene.

Richard Metcalf
Relieving Principal

DEPUTY PRINCIPAL REPORT TERM 1 - WEEK 5 AND 6

SEL / PBL Focus: Week 5 – Social and Emotional Learning (SEL) lesson 1 – **Kindergarten:** Introducing Zones and recognising our emotions / **Years 1 – 6** – The Zones in our classroom.

SEL / PBL Focus: Week 6 – PBL – Safe, Respectful Behaviour (Stop, Walk, Talk)

PROPERTY CENTRAL CITIZENSHIP AWARD



Property Central Citizenship Award for Term 1 Week 5 – the winner of the Property Central Citizenship Award for Term 1 Week 5 is Charlize J of class 6M for being a respectful student who willingly gives support to others and has a positive attitude to learning. Congratulations Charlize. Charlize received a certificate and a \$20.00 book voucher from Property Central representatives on Friday February 28.

Property Central Citizenship Award for Term 1 Week 6 – the winner of the Property Central Citizenship Award for Term 1 Week 6 is Madison S of class 6TM for being a positive, enthusiastic presence in our classroom. Congratulations Madison. Madison received a certificate and a \$20.00 book voucher from Property Central representatives on Friday March 6.



2020 Bicycle Licences: Congratulations to the following student for gaining her BBPS Bicycle Licence: Grace W – 5M



School Photographs 2020 – Thank you to all students and staff who participated in the 2020 school photographs last Thursday and Friday. Family (sibling) and special photo orders envelopes can be obtained from the front office or paid online to Master School Photographs (MSP). Photographs should be returned to families before the end of Term 1.

Semester 1 Emergency Drills: Throughout the year the school is involved in our emergency drills. During Week 6 the staff and students were involved in the Semester 1 emergency evacuation drill. The drill is evaluated by the staff with the view to improving our safety procedures so everyone in the school knows what to do in the event of a real emergency. During Week 7 (weather permitting) we will be having an emergency “lock down drill”. These drills are also repeated in Semester 2 during Term 3.



Semester 1 SRC Disco – The SRC would like to give advanced warning of our Semester 1 Disco being held on Tuesday 5 May (Term 2 Week 2) in the school hall.

The Infants disco (Years K-1-2) is from 4.30pm to 5.30pm and the Primary disco from 6.00pm to 7.00pm. The cost of the disco is \$3.00 per person payable at the hall door. The dress theme for the disco is still to be chosen by the SRC. It will be announced shortly.

Marley Playground Reward winners for Term 1 Week 6: Congratulations to our first Marley Playground Reward winners for 2020: they are: Ivie L – KWT / Ivy Mc – 1L / Harmony F – 2M / Luke B – 3S / Kye S – 4GF / Chex D – 5W and Lucy D – 6TM.

The students receive a certificate on Friday morning assembly and \$1.00 to spend at the canteen

Mark Waite
Deputy Principal

Skoolbag

Download Skoolbag our mobile app to receive communication and alerts from the school straight to your phone and devices

TLPSSA ZONE SWIMMING

On Tuesday March 3, 33 students from Bateau Bay Public School attended the TLPSSA Swimming Carnival at Mingara Aquatic Centre. It was easy to spot our school representatives in the water, with the P&C Committee generously donating Bateau Bay Public School swimming caps to our swimmers once again this year! All students displayed outstanding sportsmanship and represented our school with pride. We had some terrific results on the day with Tom B announced as the 11 Year old Boys Champion and Ava H announced as the 10 Year old Girls Champion.

Congratulations to both of these students, and all of our amazing swimmers who put in a huge effort on the day!

Thank you to the wonderful parents and friends who came to cheer on our swimmers. A special thank you to Adele Lowrie who assisted to manage our team on the day.

Results about which students will be making it through to the Sydney North carnival will be posted on the sports noticeboard once they become available.

Sophie Best and Nathan Lyons
Swimming Co-ordinators



Junior Boys Relay



Junior Girls Relay



Senior Boys Relay



Senior Girls Relay



AVA AND TOM - AGE CHAMPIONS

We are excited in 2020 to build on the year of Social and Emotional Learning (SEL) from last year. What a journey it has been! Throughout the 9 introductory lessons, we learned about the 'Zones of Regulation' and developed understandings of our emotions through self and social awareness activities. We began exploring ways to self-manage and regulate our emotions, and learned about how our behaviour can impact and influence the behaviour of those around us.

As we continue this journey, all students across the school will participate in SEL lessons as part of our PBL framework. Lessons are devised around content within the 'Wellbeing Framework for Schools' and the Australian Curriculum's (ACARA) **Personal and Social Capability Learning Continuum** to better equip our students with skills for lifelong learning and participation.

Please keep an eye out for parent and carer information which will be sent home each term through the 'Newsletter' and 'Skoolbag' app. This will coincide with lessons taught at school in support of promoting understandings and opportunities for students to transfer and develop their skills at home and within the community. We appreciate your ongoing support in this learning.

LESSON 1: The Zones of regulation in our Classroom

In this lesson, students revisit the four 'Zones of Regulation' © (Social Thinking, 2011); used to categorise different types of emotions we experience. Students work on increasing their vocabulary of emotions and recognition of facial expressions. The implementation of classroom check-in systems provides opportunities for empathy and support as we continue to learn about our emotions and how we can regulate them accordingly.

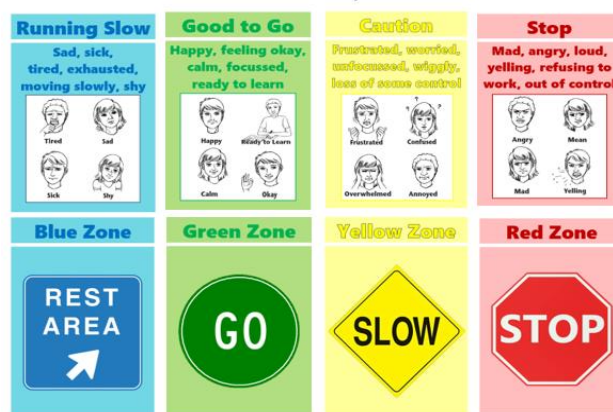
LESSON 2: Getting to know our emotions through our body signals

This lesson explores the connection between our emotions and the physicality of what we feel. We explore how different Zones might result in increased energy or rigidity, or lower energy and our need to recoup. These body signals give us clues as to how we are feeling and provide the platform for us to regulate our emotions in response.

HOW CAN YOU HELP?

- ✓ Use the language and talk about the Zones your child has experienced across the day. You might like to keep a copy of the Zones somewhere at home which is handy to refer to as your own 'check in' system
- ✓ Help your child gain an awareness of his or her Zone and feelings by pointing out your observations ie, "I can see you are frustrated, you are in the yellow zone"
- ✓ Encourage your child to share his or her Zone with you and help them to become comfortable using the language to communicate their feelings and ways they can respond accordingly
- ✓ Model how you feel - what Zone you would be in and what you will do to regulate your emotions.

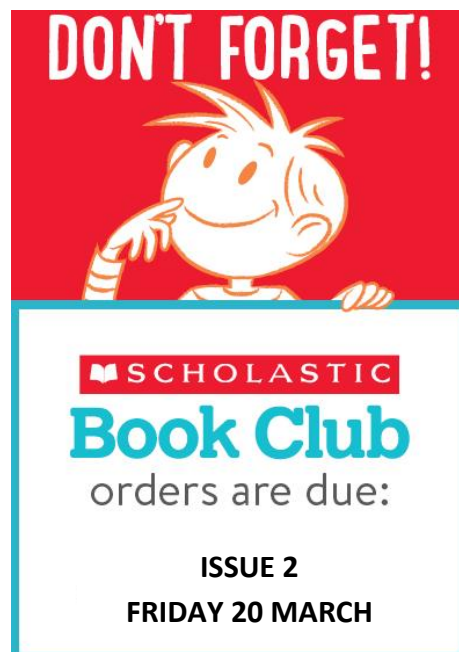
What **ZONE** are you in? © (Social Thinking, 2011)



K. Goodell (2019) Learning and Support Teacher, S.Ed., M.Ed. Adapted from 'The Zones of Regulation' © by L. Krasner, (2011). Think Social Publishing, CA.



BBPS SEL Committee



CHAPLAIN CHAT AFTERNOON CHECK-INS

Afternoon check-ins with our children are so special. It is a time when we re-connect after being in totally different spaces during the day. It's all too common to get the response "Good" to our "How was your day?" question and is very dissatisfying for carers who are keen to hear more. How actually are our children feeling?

There are questions that can help us get a better picture of what our children are thinking and feeling. Mostly, these are OPEN questions. These are not questions that can be shut down with little thought, nor are they questions that lead our children to think about what is on OUR mind. OPEN questions help access how our children are.

These are some OPEN questions that I've found helpful. Feel free to give them a try.

"What was the best and worst of your day?"

"What can you be grateful for and what made you sad today?"

"Can you tell me a time when you were in each of the Zones today" (Hint: Blue, Green, Yellow and Red)

"What is something new you learned in class or about your friends today?"

Enjoy these conversations, they'll help you get a broader picture of life at school for your child. As always, if anything is troubling, please contact your classroom teacher as the first point of contact.

Looking forward to hearing how these conversations are going.

See you in the playground,

Sue Cornish (Chaplain)

DARE TO LEAD

Bateau Bay Public School have a strong 'Dare to Lead' Team, supported by the Kuriwa AECG.



We have been busy planning exciting Aboriginal Education events and ceremonies for you in 2020. We invite families who have recently identified as Aboriginal or Torres Strait Island to contact the administration staff located in the school office to update student details on the enrolment form, to ensure all necessary information and invitations are sent home.

Kylie Murace
Aboriginal Education Contact Person

NSW Department of Education

Select Language Log in

MAKE A PAYMENT | ENROLMENT | NEWS | NEWSLETTER | EVENTS | GALLERY



Bateau Bay Public School

'En Evant - Go Forward'

T: 02 4332 8000

E: bateaubay-p.school@det.nsw.edu.au

About our school

Supporting our students

Learning at our school

Classes

Notes Home

Parent Payments

PBL

Home / Parent Payments

Parent Payments

Home

About our school

Supporting our students

Learning at our school

Gallery

Events

News

Payments can be made by:

Cash	Please put cash in an envelope marked with the event and the amount enclosed.
Cheque	Please make cheques payable to: Bateau Bay Public School
Credit Card	Credit Card payments can be made at the office.
Parent Online Payments	Online Payment

To make a payment through POP go to the Bateau Bay Public School website select **make a payment** at the top of the toolbar and follow the steps. Ignore the *SRN number on next screen

Regular School Attendance

Information for parents and carers



All children have a right to an education. Only by regular school attendance can children make the most of educational opportunities, leading to greater social and economic outcomes.

Schools play a vital role in the social and emotional development of children. Regular attendance enables students to develop a sense of belonging to a peer group and assists in building important coping and friendship skills. Confident children are less likely to engage in anti-social behaviour.

If students miss out on the basic skills in the early years of school, they may experience learning problems in later years. Ultimately, unsatisfactory attendance at school may affect the awarding of the School Certificate.

Schools, in partnership with parents, are responsible for promoting the regular attendance of students. While parents are legally responsible for the regular attendance of their children, school staff, as a part of their duty of care, monitor part or whole day absences. Parents and schools have specific responsibilities concerning children's attendance at school.

Responsibilities of the principal

Principals are legally responsible for maintaining accurate records of student attendance. When reasons for absences are provided to the school by parents, principals are accountable for their decision to record a student's absence as justified. Principals may decline to accept as satisfactory an explanation for an absence and will record that absence as unjustified.

Principals may request medical certificates or other documentation when absences explained as being due to illness are frequent or prolonged.

Responsibilities of parents

The *Education Act 1990* requires that parents (including carers) ensure that children of compulsory school age are enrolled at and regularly attend school, or are registered with the Office of

the Board of Studies NSW for home schooling. The New South Wales Department of Education and Training may take legal action against parents and carers who do not send their children to school without a valid reason.

What is a justified reason for being absent from school?

Justified reasons for absences may include the student:

- having an unavoidable medical or dental appointment (preferably, these should be made after school or during holidays)
- being required to attend a recognised religious holiday
- being required to attend an exceptional or urgent family circumstance (such as attending a funeral)
- being sick, or having an infectious disease.

Head lice infestations can be a common occurrence, particularly in primary schools. Parents should check their child's hair regularly for head lice and undertake treatment where eggs or lice are identified. Information on how schools can support parents to manage and prevent the spread of head lice can be accessed from the student health section of the Department's website at <http://www.schools.nsw.edu.au/studentsupport/studenthealth/conditions/headlice/index.php>. Advice from NSW Health indicates that there is no need for students to be sent home or excluded from school because of head lice. Having head lice is not a justified reason for prolonged absences from school.

Absences for reasons such as some of the following may not be justified:

- Shopping
- Sleeping in
- Working around the house
- Minding younger siblings and other children
- Minor family events such as birthdays
- Hair cuts.

It is important to realise that parents (including carers) may be prosecuted if children have recurring unjustified absences from school.

Keeping the school informed

If your child has to be absent from school, it is important to tell the school and provide a reason for the absence. To explain an absence parents and carers may:

- send a note, fax or email to the school
- telephone the school, or
- visit the school.

Whenever possible, parents and carers are encouraged to provide an explanation for absences before the absences occur.

The principal of the school has the right to question parents' requests for their child to be absent from school. They may also question an explanation given for a child's absence from school.

Holidays

Parents and carers are encouraged not to withdraw their children from school for family holidays. If this is necessary parents should discuss these absences with the principal and may be requested to apply for a Certificate of Exemption from attendance at school. This will ensure that these absences are not permanently recorded as unjustified.

When considering applications for Certificates of Exemption, principals may consider a variety of factors. These may include compassionate reasons, family reunions, the educational merits of the holiday and agreement for the student to complete assignments while on holiday. In some cases application for Distance Education may be more appropriate than seeking an exemption from school attendance.

Arrival on time

Arriving at school and class on time:

- ensures that students don't miss out on the important learning activities scheduled early in the day when the students are most alert
- helps students learn the importance of punctuality and routine
- gives students time to greet their friends before class and therefore,
- reduces the opportunity for classroom disruption.

Need help?

If you are having difficulty getting your child to attend school regularly, you might like to talk to the school principal or the school counsellor. In primary school you could also approach the assistant principal and in secondary school, your child's year adviser would be a good contact.

Home school liaison officers offer support with attendance at school. Some school areas also have Aboriginal student liaison officers who support the attendance of Aboriginal students.

Telephone your local Department of Education and Training regional office and speak to the student welfare consultant if you would like further support. A list of regional office telephone numbers can be accessed at the web site address: www.det.nsw.edu.au/contactus/index.htm or by telephoning 131 536.

Lateness is recorded as partial absence and must be explained by parents or carers in the same way as other forms of absence.

Must my child attend all activities, including sport?


YES. Sport and other physical activities help the healthy physical and mental development of children. Sports and sports carnivals are normal school activities and students must attend.




Traffic and Parking around your School

Parking rules are designed to stop vehicles from parking where it would be dangerous or inconvenient for others. Please consider the residents when parking in streets surrounding your school.

✓ **A School Zone** is the area around a school with a speed limit of 40 km/h. Between the School Zone and End School Zone signs you must obey the school zone speed limit. The school zone speed limit only applies on gazetted school days and during the times shown on the sign.



✓ **School Bus lights** – buses use signs and orange flashing 'wigwag' lights to warn motorists and pedestrians that they are picking up or setting down school children. The lights begin to flash when the bus stops and the doors are opened. They keep flashing for about 30 seconds after the doors close and continue even after the bus moves off. You must not drive past the bus in the same direction at more than 40 km/h while the 'wigwag' lights are flashing as there may be children crossing or about to cross the road.



✓ **A No Parking Zone** means that you must not stop for more than two minutes. You must remain in or within three metres of the vehicle. No Parking Zones are suitable for dropping off and picking up.

THESE SIGNS MEAN YOU MAY STOP HERE TO DROP OFF / PICK UP BUT YOU MUST

- stop for up to 2 minutes only
- stay within 3 metres of vehicle



Kids look to you to keep them safe - please park legally in school zones
HEAVY FINES and DEMERIT POINTS APPLY

✓ **A Bus Zone** means that the area is restricted for bus use only. If hours of operation are shown, the restriction only applies to this time. You may use this area outside of these times.



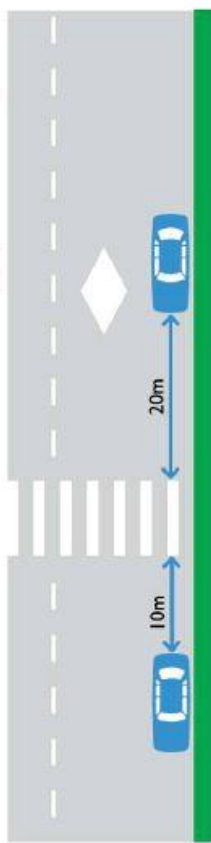
✓ **A No Stopping Zone** means no stopping at any time.



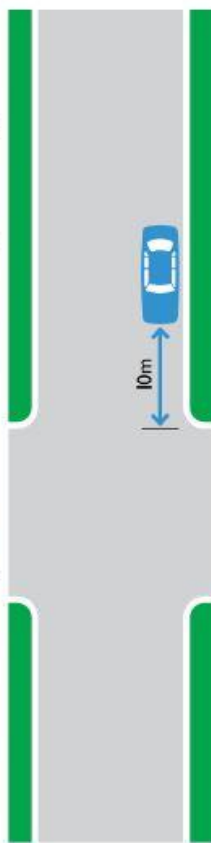
Other times when you must not stop

You must not stop your vehicle (that is, bring it to a stop and either stay with the vehicle or leave it parked) in the following circumstances:

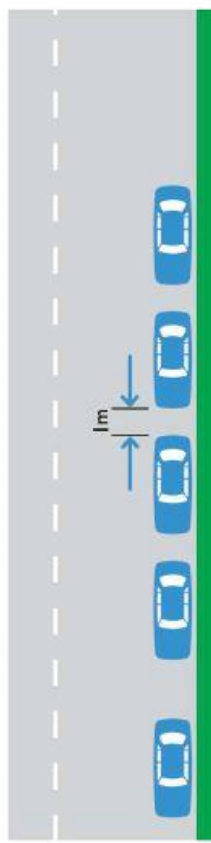
- ❌ Double parked (that is in the road alongside a car that is parked)
- ❌ Across a driveway or footpath
- ❌ On a median strip or traffic island
- ❌ On footpaths and nature strips
- ❌ On or within 20 metres before and 10 metres after a children's crossing or pedestrian crossing



- ❌ Within an intersection
- ❌ Within 10 metres of an intersecting road at an intersection without traffic lights unless signposted otherwise



- ❌ In Bus Stop, Bus Zone, Taxi Stand or Taxi Zone signed areas
- ❌ At least one metre from any other parked vehicle, close as possible and parallel to the kerb, and facing the same direction as the traffic lane



- ❌ Within three metres of any double centre lines
- ❌ Within 20 metres before and 10 metres after a bus stop

Adherence to signposting, linemarking and road rules around your school will assist in providing a safe environment for the school community and residents.

Ethics classes at Bateau Bay Public School.

Dear Parents and Carers,

Could you be an ethics teacher for Bateau Bay Public School.?

We are seeking volunteers so that we can provide ethics classes for all the families who have requested it for their children.

Ethics teachers receive full training by Primary Ethics, the not-for-profit organisation approved to design curriculum and training for the ethics program. Training consists of a two day workshop and short online modules. Lesson materials are provided. Suitable volunteers have an interest in children's education and development of critical thinking skills and must be available at Thursday 11:30-12:10 each week.:

In ethics classes, children learn how to think logically, disagree respectfully and support their arguments with evidence, rather than act according to blind habit or peer pressure.

Children discuss topic such as:

- imagining how others feel
- how do we treat living things?
- what is laziness?
- how do we disagree in a respectful way?
- fairness

If you are looking for an opportunity to make a valuable contribution to our school, please visit www.primaryethics.com.au or contact Samantha Bellamy (Ethics Teacher and coordinator) at samtoucan75@hotmail.com or on 0408699897

Mark Jennings
Deputy Principal



**MINGARA
AQUATICS**

- Swimming lessons
- Squads
- Aqua Fun
- Aqua Fitness



mingara.com.au | 4349 7821 | facebook.com/mingaraaquatics

Kip McGrath EDUCATION CENTRES

**ENGLISH AND MATHS
TUTORING**

✓ Primary - Secondary ✓ Qualified Teachers ✓ Personalised Learning Programmes

Book a free assessment today • 02 4333 5760

Bateau Bay • 5/3 Farrar Way • kipmcgrath.com.au/bateau-bay




Healthy & Delicious

Ready Made Meals
Gluten Free | Dairy Free | Paleo | Vegan | Vegetarian

FREE DELIVERY on first order!

Use code: **BATEAUBAY**
222 The Entrance Rd Erina

 activatefoods.com.au



McGrath

Carl & Sabina Baker 0405 361 517
"Bateau Bay Area Specialist"



CREATIVE KIDS

Fun Languages **BATEAU BAY PUBLIC SCHOOL**

ENROLLING FOR TERM 1 2020

French Club on Tuesday 1.30pm - 2.10pm
Only for students from Year 1 up to Year 6

Cost is \$12.50 per child per class
Limited places available

To receive an information Pack for 2020
Please Call 0430 286 590
nathalie.roy@lcfclubs.com.au
www.lcfclubs.com.au




Bateau Bay Public School
P&G Association
Before & After School Care



Phone: 4333 5168 Mobile: 0478 762 464

OPENING HOURS

Before School	6.30am-8.30am
After School	2.50pm-6.30pm
Vacation Care	7.00am-9.00pm

Breakfast and Afternoon Tea is provided daily

Kindergarten students are escorted to and from their classrooms

This space is available for your yearly commitment to Bateau Bay Public School.

Please contact the office on 4332 8000

**Space Available
For
Advertisement**

This space is available for your yearly commitment to Bateau Bay Public School.

Please contact the office on 4332 8000

**Space Available
For
Advertisement**