

Newsletter

PRINCIPAL REPORT**STAFFING CHANGES 2020**

As we commence our planning for the year 2020, we will have some staffing changes.

Mr Webb has accepted a transfer to The Tuggerah Lakes Secondary College, Tumbi Umbi Campus to pursue teaching mathematics which has always been a passion of his. Kyle has made significant contributions to Bateau Bay Public School over the past five years, not only as a class teacher, but in his extensive contributions to his teaching stage, to sporting organisation both at school and district level, to our Aboriginal programs and his many contributions to staff development through the WICOR, English and mathematics programs he has supported. Mr Webb has been one of our 'quiet achievers', a hard worker often behind the scenes. His support of students, staff and families has been greatly appreciated. We wish Mr Webb nothing but the very best in his new endeavours, and look forward to continuing our close working relationship through our various shared school programs. The Department of Education (DoE) Human Resources (HR) department has appointed Mrs Emma Milliss as a class teacher to commence in 2020.

Ms Erin Cole, who has been on maternity leave, has accepted a transfer to Kurri Kurri, which will have a huge impact for her as it is very close to where she lives. Again we thank Erin for her many contributions over the years, in particular her support of our cultural programs, and her input into the development of a number of our Aboriginal programs, including her extensive contributions to GulangFest and our AECG. The DoE has appointed Ms Zara Clarke as a class teacher to commence in 2020.

Mrs Kylie McGavin, who has been working as an Instructional Leader at Kincumber Public School was successful in her application for the role of Assistant Principal at Empire Bay Public School, and has commenced her role there this term. Ms Janine Stretton has accepted a transfer to our school for the start of the 2020 year. Ms Stretton currently works at Macquarie Fields Public School and comes to us with a great deal of experience.

We look forward to welcoming our new staff.

**EN AVANT – GO FORWARD**

2A Waratah Street
Bateau Bay NSW 2261
Phone: 4332 8000
Fax: 4334 3121

Email: bateaubay-p.school@det.nsw.gov.au

School P&C Meets on the second Tuesday of month during school term. All members of the school community are invited to attend.



CENTRAL COAST CHORAL FESTIVAL (CCCF)

As I write this article our students in the CCCF choir are finishing their rehearsal ready for their performances on Thursday at the Art House Wyong. Our choir, beautifully led by Ms Pizzuto and Mr Lyons need to be congratulated on their consistent hard work over the last two terms. Their dedication to rehearsals and their joy in participation has been fabulous.

Our thanks also to our teachers who have given up so much of their time in support of the students.

TLLC BALL GAMES GALA

Again, as I write this, our teams of students from Stage 2 and 3 are readying themselves for the TLLC Ball Games Gala day. They have been practising their skills and are ready for a fun day.

Thank you to Mrs Healas who has organised this event for our learning community, along with Ms Yeo, Ms Carothers and Mrs McCranor for their time and hard work.

SELECTIVE HIGH SCHOOL APPLICATIONS

Once again students who have sought acceptance into Gosford Selective High School have had success, with four of our students being offered a place to start in 2020, with another two students on the reserve list.

At the end of last term, families with students in Year 5 would have received a note outlining the process for applications for Year 7 to Selective High School in 2021. All applications must be done online at:

<https://education.nsw.gov.au/public-schools/selective-high-schools-and-opportunity-classes/year-7>

This site will close shortly on 11 November 2019.

No late applications will be considered by the DoE.

PLANNING 2020 (Repeat Article)

As we begin our planning for 2020, I would encourage parents to let us know in writing if there are any circumstances they feel we should know which will support the placement of their child for next year. The formation of classes takes many, many hours of discussion, use of data and the knowledge our staff have of the students. ***Whilst we are happy to consider any specific circumstances raised by parents, ultimately, the school will make the final choice regarding student placements.***

Any requests for consideration need to be submitted by Friday 15 November.

Similarly if you have a student at Bateau Bay Public School who is NOT in Year 6 and will not be returning to us next year would you please let us know. The number of students at our school affects the planning for classes, teachers and school programs so the earlier we have information the better. Please write a note to your child's teacher or drop it into the office.

Michelle Principal
Principal



Upcoming Events...

Mon 11 Nov	Remembrance Day Ceremony 10:30am
Wed 20 Nov	Year 6 Tumby High School Orientation Day 8am-2:15pm
Fri 22 Nov	Year 3 Taronga Zoo Excursion - Rescheduled
Fri 29 Nov	End of year PBL Obstacle all day
Mon 2 Dec	Primary Sports Assembly 9:15am
Tue 3 Dec	Year 5 CARES Excursion – Group 1
Wed 4 Dec	Year 6 Tumby Gala Day Year 1 Presentation Day – 9:15am Hall Stage 2 Presentation Day – 11:30am Hall
Fri 6 Dec	Year 2 Presentation Day – 9:15am Hall
Mon 9 Dec – Wed 12 Dec	Swim School
Tue 10 Dec	ES1 Presentation Day – 9:15am Hall
Wed 11 Dec	Stage 3 Presentation Day – 9:15am Hall
Mon 16 Dec	Year 6 Farewell – Breakers Country Club
Wed 18 Dec	Last Day of Term 4

**PLEASE NOTE THAT ALL DATES
ARE SUBJECT TO LATE CHANGE**

DEPUTY PRINCIPAL REPORT TERM 4 WEEK 1 AND 2

PBL/SEL WEEKLY FOCUS:

Week 1: Oval - During assemblies we need to sit in our class lines, have our voices at level zero and practise the 5Ls to show we are actively listening.

Week 2: Assemblies - When playing on the ovals we must wear our sunsafe hats, stay in bounds and demonstrate sportsmanship and kind language to others.

The next two weeks will be focused on **Social and Emotional** lessons looking at our Zones across different environments in the school.



MARLEY PLAYGROUND REWARDS

Congratulations to our Marley Playground Reward winners for Term 4 Week 1 and Week 2.

	Week 1		Week 2	
Kindergarten	Aria F	KH	Phoenix C	KD
Year 1	Elsie S	1S	Toby L	1N
Year 2	Cailin O'	2J	Luke B	1/2C
Year 3	Georgia G	3H	Aaliyah H	3H
Year 4	NO WINNERS		NO WINNERS	
Year 5	NO WINNERS		NO WINNERS	
Year 6	NO WINNERS		NO WINNERS	

Congratulations to our Marley Playground Reward winners. They will receive a certificate and \$1.00 to spend at the canteen.

PROPERTY CENTRAL CITIZENSHIP AWARD



Term 4 Week 1 winner of the Property Central Citizenship is Aiva P of class KB. Her award read: 'for

brightening our classroom every day with her infectious smile and personality and for always being a caring and thoughtful student'. Congratulations Aiva.

PROPERTY CENTRAL CITIZENSHIP AWARD



The Term 4 Week 2 winner of the Property Central Citizenship is Sunny M of class 5/6T. His award

read: 'for being a positive and calm influence to others, always willing to step in and offer help if needed'. Congratulations Sunny

Aiva and Sunny were each presented with a certificate and a \$20.00 book voucher from Property Central.

BICYCLE LICENCE: Congratulations to Matilda H for obtaining her 2019 bicycle licence. Matilda has agreed to follow the BBPS bicycle safety guidelines.



YEAR 5 STUDENT LEADERSHIP

Best wishes to our Year 5 students who are in the process of applying for student leadership positions in 2020. We have many worthy candidates and I would like to congratulate every student who has had the courage to put themselves forward for a position.

Thank you to Mrs Fraser and Mrs Bacon for their thorough preparation of students and organisation of the application process. Thank you also to Mr Waite and Mrs Taylor for their support as candidate interviewers.

Angela Moulton
Relieving Deputy Principal

HOME READING SCHEME

Congratulations to the following students who have received book prizes for their enthusiasm and dedication to home reading:



• Mason KH	• Toby 1N
• Lara KH	• Abigail KL
• Isaac 1S	• Sienna KL
• Sonny KCS	• Harrison KB
• Sophie KB	• Kailan KH
• Ivy KD	• Airlia KD
• Tabitha 1N	• Flynn KH
• Andie 1N	• Tyler 1N
• Ryan 2J	• Oscar 2M
• Jacob 2M	• Hunter 2L
• Bella KCS	• Aria KH
• Georgia KCS	• Mason 1V
• Dustin 1V	• James 1N

PAYMENT REMINDERS

Book Pack	\$70.00
Stage 3 Sport	\$120.00
Stage 3 Barefoot Yoga	\$30.00
Year 2 & Year 3 Swim School	\$50.00

Payments can be made payable by
Cash, Cheque or POP.

**CREDIT CARD FACILITIES
AVAILABLE AT THE OFFICE
BETWEEN 8.30AM - 2.00PM**

KINDERGARTEN 2020 NEWBEES TRANSITION PROGRAM

Parents and children are invited to attend our Kindergarten NEWBEES Transition Program.



Week 1

Tuesday 5 November OR Thursday 7 November
9.30-10.30am

Week 2

Tuesday 12 November OR Thursday 14 November
9.30-10.30am

Week 3

Tuesday 19 November OR Thursday 21 November
9.30-10.30am

Final Assembly (All Welcome to attend)

Thursday 28 November – 9.30-10.30am

Please enrol at the front office
if you have not already done so.

SEL Social & Emotional Learning

STUDENT WELLBEING – PARENT & CARER INFORMATION

Over the past two SEL lessons, students at Bateau Bay have been adding to their strategies of being aware of our emotions and how to respond to them. In Lesson 6 we explored sensory strategies – ways to keep our body and mind grounded when we feel like we are in the YELLOW, BLUE or RED zones and in Lesson 7 this week, we have begun to sort through the strategies that are the 'best-fit' for us personally.

Lesson 6: Exploring Sensory Strategies

Students develop understandings that while a particular strategy might be useful and calming for them, it may have a different effect on another person. They develop skills to reflect on diversity and acceptance of individual needs and differences.

Lesson 7: My Strategies

Students build a set of strategies that they can use to deal with problems they encounter and regulate their zone. Some of the strategies will help you wake you up or get you out of the Blue Zone, while others will calm you down from the Red or Yellow Zone. Other strategies will help you keep feeling just right, so they will be your Green Zone strategies.

HOW CAN YOU HELP?

- ✓ What strategies did your child enjoy? Look through the Zones Menu above to help refresh their memory.
- ✓ Talk to your child about the idea that if a strategy doesn't work the first time, or in certain situations, not to discard it. They simply keep it with their strategies and try it again another time or in a different situation.
- ✓ **Ask your child to teach you the 5 senses 5-4-3-2-1 strategy.**
- ✓ **Have you tried these sensory strategies? Wall sits:** Secure your back to the wall at the height of a student's chair, or knee-level. Challenge: see how long you can sit against the wall! **Wall push ups:** Secure hands to the wall at chest height for child. How many wall push-ups can they do? Challenge them to push so hard on the handprints that they "push the wall down"!

BBPS SEL Committee

CONNECT



SUCCEED



THRIVE



BBPS FUNDRAISING COMMITTEE

LOOSE CHANGE CHALLENGE

2019

IS COMING!!

START COLLECTING YOUR
LOOSE CHANGE!

IN WEEKS 4&5, BRING YOUR COINS
TO YOUR CLASSROOM AND PLACE
IN YOUR ALLOCATED TIN.



THE CLASS THAT RAISES THE MOST
MONEY WILL WIN A PIZZA PARTY!!



PARKING INFORMATION

Please be mindful of the parking regulations when parking around the school. The police and council rangers may fine illegally parked vehicles. The NSW parking regulations have been added to assist. Thank you for your cooperation.

Mark Jennings
Deputy Principal

STOPPING DISTANCES

STOPPING IN OR NEAR AN INTERSECTION

You must not stop or park in an intersection. You must not stop or park on a road within 20 metres from the nearest point of an intersecting road at an intersection with traffic lights, unless you stop or park at a place on a length of road, or in an area, to which a parking control sign permitting stopping applies.

You must not stop or park on a road within 10 metres from the nearest point of an intersecting road at an intersection without traffic lights, unless you stop or park at a place on a length of road, or in an area, to which a parking control sign permitting stopping applies or if the intersection is a T-intersection along the continuous side of the continuing road at the intersection.

STOPPING ON OR NEAR A CHILDREN'S CROSSING

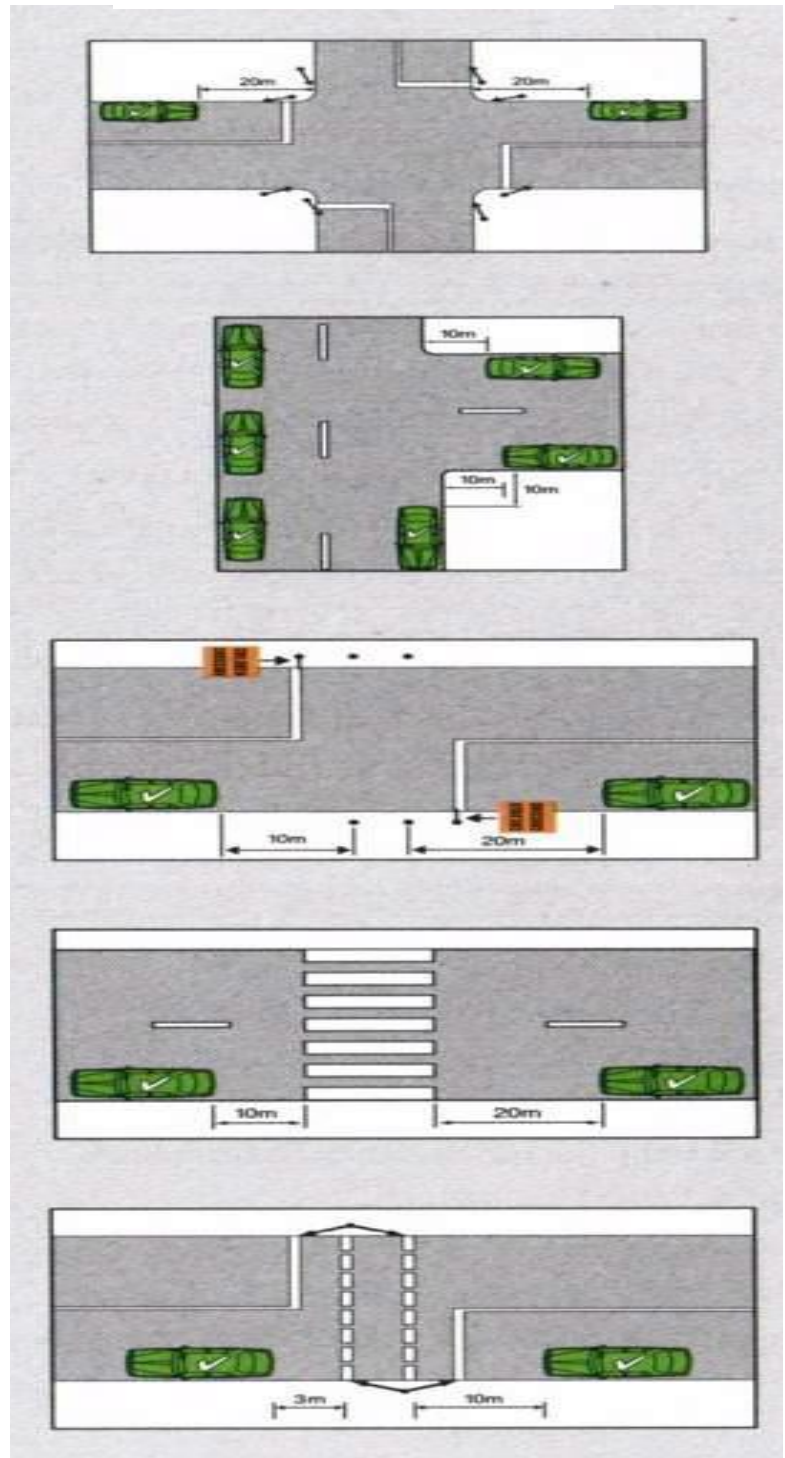
You must not stop or park on a children's crossing, or on the road within 20 metres before the crossing and 10 metres after the crossing, unless you stop or park at a place on a length of road, or in an area, to which a parking control sign permitting stopping applies.

STOPPING ON OR NEAR A PEDESTRIAN CROSSING (EXCEPT AT AN INTERSECTION)

You must not stop or park on a pedestrian crossing (that is not at an intersection), or on the road within 20 metres before the crossing and 10 metres after the crossing, unless you stop or park at a place on a length of road, or in an area, to which a parking control sign permitting stopping applies.

STOPPING ON OR NEAR A MARKED FOOT CROSSING (EXCEPT AT AN INTERSECTION)

You must not stop or park on a marked foot crossing or on the road within 10 metres before the traffic lights pole nearest to you at the crossing (that is not at an intersection), and 3 metres after the crossing, unless you stop or park at a place on a length of road, or in an area, to which a parking control sign permitting stopping applies.



Calling for volunteers – we need your help!

Our students really enjoy participating in the Commonwealth Bank School Banking program and to keep this program running we need your help.

The program requires a volunteer School Banking Co-ordinator to facilitate the banking and distribution of School Banking rewards. This only takes a small amount of your time one day a week and the Commonwealth Bank will provide support in how to run the program. Your help with the program will greatly benefit students as they develop vital saving skills and help our school with fundraising.

We currently have a team of 3 volunteers who process the banking, one will be finishing at the end of the year and we would love to have another person/s trained up before the end of the year.

School banking day is **Wednesday**.



If you are interested in volunteering for this great program, please fill in the tear off section below and return it to office.

Yes, I would like to help with School Banking!

Name: _____

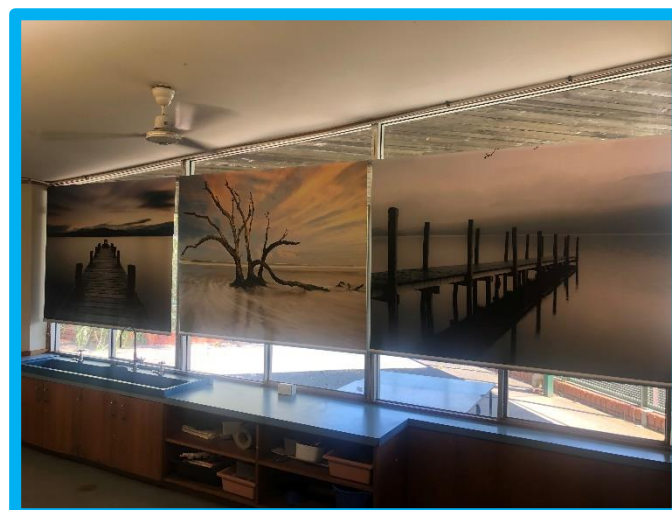
Phone: _____

Email: _____

Availability: _____

STAGE 3 PRINTED BLINDS

Thank you to the P&C for the generous donation in supplying printed blinds to our Stage 3 Wet Area.



LEAVING BATEAU BAY PUBLIC SCHOOL

Is your child leaving Bateau Bay Public School at the end of 2019? (Not including Year 6 Students)

Name: Class:

Name: Class:

Name of school that your child/ren will attend in 2020:

Please return this section to the front office.

THE ELDERSLEE FOUNDATION BRING YOU THE 2019

CENTRAL COAST

KIDS DAY OUT

at NARARA VALLEY HIGH SCHOOL

CELEBRATING ME

It's our
20th
Birthday!

**Sunday
3rd Nov
10am-3pm**

All day entertainment
for the whole family!

HEY KIDS Visit the Party Room!
and for free play visit the
Creative Construction Zone!
cckdo.org for details



cckdo.org

KIDS SHOWS & GREAT ENTERTAINMENT FOR ALL THE FAMILY. ALL THE USUAL RIDES, STALLS, INTERACTIVE WORKSHOPS & ACTIVITIES.

ADULTS \$8 KIDS \$4 FAMILY ^{2 ADULTS PLUS UP TO 4 KIDS} \$25 KIDS UNDER 1 FREE



MEET & GREET
Wackadoo! Bluey
and her little sister
Bingo are heading
to Kids Day Out
on Sunday 3rd Nov

BLUEY TM and BLUEY character logos TM & © Ludo Studio Pty Ltd 2019

THE 20TH ANNUAL CENTRAL COAST KIDS DAY OUT 2019 IS PROUDLY SPONSORED BY

ELDERSLEE FOUNDATION

Growing our Central
Coast Community



NBN
NEWS

new leaf
DENTISTS

on the
coast
FAMILIES



Primula
Breerton

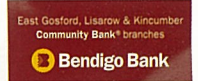


Education &
Communities

SEA
101.3
CENTRAL COAST



Narellan
pools



CENTRAL COAST KIDS DAY OUT 2019 CONNECTING FAMILIES TO SOCIAL SERVICES



North Entrance Beach Auskick Program

North Entrance Surf Life Saving Club – 77 Hutton Rd The Entrance North

DAYS: Fridays

DATES: Nov 8 to Dec 6 inclusive

TIME: 5.00pm – 6.00pm

COST: \$51.00

Five weeks of NAB AFL Beach Auskick Tuition and activities (for boys & girls aged 5-10)

PLUS an AFL Pack (football, pump, blue tooth speaker and much more)

To register and pay online go to www.play.afl/auskick and enter your suburb

Then click on North Entrance Beach Auskick Centre & follow the prompts

For more information email mitchell.ede@afl.com.au



Australian
Air League

NSW Group

JOIN NOW

Doyalson Girls Squadron

is now enrolling.



Since 1934 the Australian Air League has been teaching young boys and girls nationwide all about aviation, while helping them develop important life skills like leadership, discipline, self-confidence and teamwork. When you join the league you will make new friends and take part in fun and exciting activities, on the ground and in the air.

Each week you will attend your local squadron where you will learn valuable skills and take part in fun and interesting activities and classes. Some of our classes include Meteorology, Navigation, Photography and Community Service. Squadrons also attend training camps, sport and recreational days, flying experiences and ceremonial drill.

We welcome girls and boys from the age of 8 years old from all different cultures and backgrounds. Parents and families are welcome to support or even join their local squadron as a volunteer. All adult members and volunteers are Working with Childrens Checked.

The Australian Air League is running both a fun and educational programme that is making fine citizens out of our young Australians.



Doyalson Girls Squadron

Meeting Night: Friday

Meeting Times: 6.30pm till 9.00pm

Meeting Address: Cottage in the grounds of Doyalson RSL Club
next to the recycling station, Doyalson NSW 2262



FOR MORE INFORMATION PLEASE CONTACT

Pam Price 0409 152 817 or

Brendon Gregory 0402 380 665

Email: pamprice1@bigpond.com or b.gregory@aalcenralcoast.com

www.airleague.com.au Email: info@airleague.com.au

Free Call: 1800 502 175



The Department of Education has provided schools with access to Minecraft: Education Edition. Minecraft Education Edition is a highly engaging, virtual educational platform that provides an opportunity for students and teachers to collaborate and create in an immersive environment. It is also a platform where students can safely demonstrate their learning and competence in a scaffolded, simulated real world experience.

What are some of the benefits of using Minecraft: Education Edition?

- Builds skills around particular subjects such as science, technology, engineering and mathematics (STEM), history, geography or coding.
- Supports students to engage in virtual learning experiences that directly link and expand on the subjects being taught in the classroom.
- Teaches students to be 'digital citizens' through the use of an online system where they need to work together to solve problems.
- Promotes creativity, problem solving and critical thinking.
- Allows students to actively collaborate with their classmates on school work.
- Helps students build working relationships with each other.
- Promotes knowledge sharing as students guide each other on how to perform tasks.
- The Chemistry Update allows students to experiment with chemical reactions safely.
- Portfolios and cameras in Minecraft: Education Edition allow students to provide evidence of their learning for assessment.

Isn't Minecraft just a game?

The Education Edition of Minecraft has been specifically created to be used in educational settings. A clear learning objective is created and used by educators. Access to the game is teacher-led with teachers controlling access to the functions available to students.

Where can I get more information?

If you have further questions about students using Minecraft: Education edition, please contact the school.

Additional Information is available at:

<https://education.minecraft.net/how-it-works/why-minecraft/>
<https://www.lifehack.org/articles/technology/10-reasons-why-minecraft-beneficial-for-your-kids.html>
<https://www.digitalcitizenship.nsw.edu.au/>
<https://www.esafety.gov.au/parents/online-safety-guide>

STUDENT'S STAGE 3 GEOGRAPHY ASSESSMENT TASK USING MINECRAFT



I chose quartz for the majority of my build because it is easy to get, it is weather resistant, and because it is white, which means that it will deflect heat.



I'm being environmentally friendly by using solar panels for electricity, using a compost bin to recycle food scraps, and by building a windmill to pump water up if the river dries up.



Bateau Bay Public School
P&G Association
Before & After School Care



Phone: 4333 5168 Mobile: 0478 762 464

OPENING HOURS

Before School	6.30am-8.30am
After School	2.50pm-6.30pm
Vacation Care	7.00am-9.00pm
Breakfast and Afternoon Tea is provided daily	
Kindergarten students are escorted to and from their classrooms	



activatefoods.com.au

Healthy & Delicious

Ready Made Meals

- Gluten Free
- Dairy Free
- Paleo
- Vegan
- Vegetarian

FREE delivery on first order! Use code:

BATEAUBAY

222 The Entrance Rd Erina

Fun Languages

FRENCH FOR KIDS CLUB

Enrolling Now for 2019 French Class @ Bateau Bay Public School

Fun and interactive classes for Year 1 – Year 6 students

Every Tuesday during school time - Cost \$12.50 + GST per class

**For More info please call Nathalie Roy
0430 286 590**

Email Nathalie.roy@lcfclubs.com.au
www.lcfclubs.com.au



MINGARA AQUATICS

- Swimming lessons
- Squads
- Aqua Fun
- Aqua Fitness



mingara.com.au | 4349 7821 | facebook.com/mingaraaquatics



ACTIVE FITNESS
SOLUTIONS

- PERSONAL TRAINING & GROUP TRAINING
- PRIVATE STUDIO IN BATEAU BAY
NO GYM FEES!
- ONE COMPLIMENTARY SESSION FOR
BATEAU BAY PUBLIC PARENTS

MATT 0408-474-770



McGrath Estate Agents - Supporting our Community

Melanie Sommers

Scott Falconer

0418 407 149

0438 825 662



ENROL NOW FOR 2019!

Classes held at our Long Jetty HQ
5 Minutes away from Bateau Bay!

2 Years to Adults

Classes 6 Days a Week
- 5B Toowoyn Bay Road -



SAVE UP TO \$200!
WITH YOUR CREATIVE & ACTIVE KIDS VOUCHER



Classes from \$6 - Try your first week FREE! - www.jbdance.com.au

KipMcGrath EDUCATIONCENTRES

ENGLISH AND MATHS TUTORING

✓ Primary - Secondary ✓ Qualified Teachers ✓ Personalised Learning Programmes



Book a free assessment today • 02 4333 5760

Bateau Bay • 5/3 Farrar Way • kipmcgrath.com.au/bateau-bay